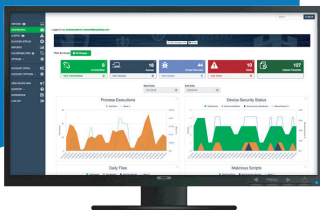


# Essential Endpoint Protection



## Endpoint Security Software

- ✓ Automated Global Whitelist Technology
- ✓ Industry Leading Ransomware Prevention
- ✓ Fileless Malware Protection
- ✓ RDP Brute Force Security
- ✓ Cloud Based Management Console
- ✓ Remote Administration
- ✓ Driver and Patch Management
- ✓ Detailed Alerting and Reporting
- ✓ Performance Optimization
- ✓ Protects PCs and Mobile Devices
- ✓ Made in the USA



## Superior Endpoint Security & Global Whitelist Technology

**Essential Endpoint Protection** takes a fundamentally different approach to endpoint security with our exclusive Automated Global Whitelist technology. Only 'trusted' applications are allowed to run on the endpoint providing a significantly better security solution than traditional anti-virus products.

If an application is not on the Whitelist, **Essential Endpoint Protection** blocks it, and the proprietary automation technology uploads the sample for immediate analysis and classification by our malware professionals. This automated process of analysis and classification keeps the whitelist updated in real time without user intervention.

Setup and manage thousands of devices centrally from a single pane of glass and deliver the right security to the right people in real time.



**Whitelist Security** - Our solution uses application whitelisting for advanced malware prevention and detection, device authentication, Microsoft Office security, and more.



**RDP Controls** - Comprehensive RDP controls including the ability to enable and disable sessions, schedule remote access permissions, generate activity log reports, and authenticate devices for remote access.



**Endpoint Optimization** - Enjoy total automation of endpoint maintenance with powerful endpoint optimization for applications, Windows and network settings.



**Remote Accessibility** - Remote access with multi-factor device authentication makes deployment, installation, access, and computer management easier than ever.



**Cloud-Based Dashboard** - Our central dashboard provides system health at-a-glance, and key metrics such as CPU load, storage utilization and bandwidth-use, in one central location - along with device and session settings management.



**Driver Management** - Our Essential Endpoint Protection solution has the world's largest collection of hardware drivers, making it the fastest and simplest way to ensure all of your endpoints start fast and stay fast without the hassle of tracking down missing drivers.



**Award-Winning  
with whitelist  
technology**



**Developed &  
supported in  
the USA**



**Cloud-based  
ensuring optimal  
performance**



**Most effective  
ransomware  
protection**